

**CJV150 Series**  
CJV150-75/107/130/160

# The CJV150 series delivers...

High-quality printing and sharp, accurate cutting for fresh, brilliant ideas and hundreds of different applications.

## CJV150-75

For simple stickers and labels

The small-footprint CJV150-75 is perfect for stickers, labels and PoS materials.

Width: 0.8m

## CJV150-107

For banners and large-size posters

The CJV150-107 delivers a quick output with high quality print. Ideal for pop-up banners and large posters

Width: 1.1m

## CJV150-130

For larger signage and PoS marketing materials

The wider but modestly-sized CJV150-130 provides even more flexibility.

Width: 1.3m

## CJV150-160

For cost effective production of large, high-quality signage and vehicle wrapping films

The CJV150-160 has the widest working width in the range, and satisfies a wide variety of production demands.

Width: 1.6m

## RasterLink 6

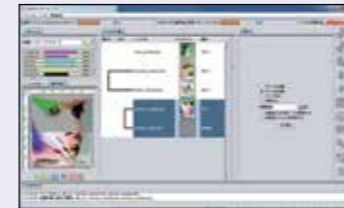
Intuitive and user-friendly operation



1. Easy to follow icons enable intuitive and user-friendly operation



2. Related settings feature in one window to simplify RIP operations with 'Register as Favourite' option available for regularly used layouts



3. Printing progress can be monitored on the main screen

**3-layer printing**  
Enables simultaneous 3-layer printing:  
e.g. Colour → White → Colour

**Web update function is supported:**  
This facility enables easy program updates and profile downloading to be performed via the internet.

### Specifications

|                         | CJV150-75  | CJV150-107  | CJV150-130                            | CJV150-160            |
|-------------------------|--|---|---------------------------------------|-----------------------|
| Print head              | On-demand piezo head   |   |                                       |                       |
| Print resolution        | 360dpi, 540dpi, 720dpi, 1,080dpi, 1,440dpi   |   |                                       |                       |
| Maximum print width     | 800mm  | 1,090mm   | 1,361mm                               | 1,610mm               |
| Maximum media width     | 810mm  | 1,100mm   | 1,371mm                               | 1,620mm               |
| Ink                     | Type/Colour  | <b>Solvent ink</b><br>SS21 (C, M, Y, K, Lc, Lm, Lk, Or, W, Si)<br>BS3 (C, M, Y, K) - only available to non-EU countries<br><br><b>Water-based sublimation ink</b><br>Sb53 (Bl, M, Y, K, DK, Lb, Lm) - not compatible with the CJV150-75 model |                                       |                       |
|                         | Package size   | SS21: 440ml ink cartridge/2L ink pack*1,2<br>BS3: 600ml ink pack/2L ink pack*2<br>Sb53: 440ml ink cartridge/2L ink pack*2   |                                       |                       |
| Circulation system      | MCT (Mimaki Circulation Technology)  |   | Only applies to white and silver inks |                       |
| Media thickness         | 1.0mm or less  |   |                                       |                       |
| Rolled media weight     | 40kg or less   |   |                                       |                       |
| Certifications          | VCCI class A / FCC class A / ETL UL 60950<br>CE Marking (EMC, Low voltage, and Machinery directive) / CB<br>RoHS / REACH and Energy Star / RCM |   |                                       |                       |
| Interface               | USB 2.0, for E-mail notification function  |   |                                       |                       |
| Power supply            | Single-phase (AC 100-20V / AC 220-240V)  |   |                                       |                       |
| Power consumption       | 100V: 1.44 kVA × 1 or less, 200V: 1.92 kVA × 1 or less   |   |                                       |                       |
| Operational environment | Temperature: 20-30°C (59-86°F), Humidity: 35-65% Rh (Non condensing)   |   |                                       |                       |
| Dimensions (W × D × H)  | 1,965 × 700 × 1,392mm  | 2,255 × 700 × 1,392mm   | 2,525 × 700 × 1,392mm                 | 2,775 × 700 × 1,392mm |
| Weight                  | 126kg  | 142kg   | 157kg                                 | 168kg                 |

\*1: White and silver are provided in 220ml ink cartridge only.  
\*2: Optional MBIS3 (Mimaki Bulk Ink System) is required for using 2L ink pack.

### Options

| Item  | Item No.              |
|---|-----------------------|
| Drying fan 75 / Drying fan 107                            | OPT-J0369 / OPT-J0368 |
| Exhaust kit 75 / Exhaust kit 107                          | OPT-J0372 / OPT-J0371 |
| 150-75 Static sheet / 150-107 Static sheet                | OPT-J0374 / OPT-J0373 |
| Drying fan 130 / Drying fan 160                           | OPT-J0352 / OPT-J0351 |
| Exhaust kit 130 / Exhaust kit 160                         | OPT-J0354 / OPT-J0353 |
| Static prevention sheet 130 / Static prevention sheet 160 | OPT-J0357 / OPT-J0355 |
| AMF130 Kit / AMF160 Kit                                   | OPT-J0360 / OPT-J0359 |
| Jig-Head gap check  | OPT-J0375             |
| MBIS3 (Mimaki Bulk Ink System)                            | OPT-J0364             |
| Eco case for 600 ml ink bag                               | OPT-J0361             |

\* Some of the samples in this folder are artificial renderings • Specifications, design and dimensions stated in this folder may be subject to change without notice (for technical improvements, etc.)  
\* The corporate and merchandise names written on this folder are the trademark of the respective corporations • Inkjet printers print using extreme fine dots, so colours may vary after replacement of the printing heads, also note that if using multiple printer units, colours could vary slightly from one unit to other unit due to slight individual differences • Composer's errors reserved

### Supplies

| Item | Colour        |             |
|------|---------------|-------------|
| SS21 | Cyan          | SPC-0501C   |
|      | Magenta       | SPC-0501M   |
|      | Yellow        | SPC-0501Y   |
|      | Black         | SPC-0501K   |
|      | Light Cyan    | SPC-0501LC  |
|      | Light Magenta | SPC-0501LM  |
|      | Orange        | SPC-0501Or  |
|      | Light Black   | SPC-0501Lk  |
|      | White         | SPC-0504W-2 |
|      | Silver        | SPC-0504Si  |
| BS3  | Cyan          | SPC-0588C   |
|      | Magenta       | SPC-0588M   |
|      | Yellow        | SPC-0588Y   |
|      | Black         | SPC-0588K   |
|      | Light Cyan    | SPC-0588LC  |
|      | Light Magenta | SPC-0588LM  |
|      | Orange        | SPC-0588Or  |
|      | Light Black   | SPC-0588Lk  |
|      | Cyan          | SPC-0667C   |
|      | Magenta       | SPC-0667M   |
| Sb53 | Yellow        | SPC-0667Y   |
|      | Black         | SPC-0667K   |
|      | Cyan          | SPC-0693C   |
|      | Magenta       | SPC-0693M   |
|      | Yellow        | SPC-0693Y   |
|      | Black         | SPC-0693K   |
|      | Blue          | SB53-BL-44  |
|      | Magenta       | SB53-M-44   |
|      | Yellow        | SB53-Y-44   |
|      | Black         | SB53-K-44   |
| Sb53 | Deep Black    | SB53-DK-44  |
|      | Light Blue    | SB53-LBL-44 |
|      | Light Magenta | SB53-LM-44  |
|      | Blue          | SB53-BL-2L  |
|      | Magenta       | SB53-M-2L   |
|      | Yellow        | SB53-Y-2L   |
|      | Black         | SB53-K-2L   |
|      | Deep Black    | SB53-DK-2L  |
|      | Light Blue    | SB53-LBL-2L |
|      | Light Magenta | SB53-LM-2L  |

VERSATILE PRINT & CUT FUNCTION

The multiple functions of the CJV150 models ensure high-quality printing and high-accuracy cutting enabling the production of labels, stickers and vehicle wraps with ease.

### Continuous-register mark-detection function enables continuous media cutting.

The CJV150 automatically detects all register marks set by RasterLink6 on the media, and cuts contour lines precisely by utilising simultaneous automatic calibration.



### Print and cut on no-register mark media / Cut and print function

Media up to 1m in length does not require register marks, reducing media wastage.

### Segment correction function facilitates precision cutting over longer-length prints.

This function detects intermediate register marks and enables four-point corrections for each segment to ensure accurate contour cutting over longer-length prints, even if the image is distorted.

### Over-cut and corner-cut functions ensure clearly cut edges with no residues.

The over-cut function ensures sharply cut edges with no residues by making a cross cut at the start and end positions of the contour cutting. The corner-cut function ensures sharply cut edges by making cross cuts at each corner.



### Clamp-pressure automatic-switching function enables continuous operation.

The pressure of the media clamps is automatically optimised for printing and cutting. No pressure adjustment by the operator is required during continuous operation.

### "Cut and Print" function improves the workability of thin materials.

This function prevents common problems, such as film separation and faulty cut results, by cutting the media before printing.

### Versatile cutting methods satisfy a range of market demands.

"Half-cut" produces a series of half and die cuts, leaving a few connection points that retain the printed image on the medium. "Die cut" completely cuts the printed image from the medium. "Perforation cut" is useful for clipping images from the medium, used as crease lines.

Affordable, integrated printer/cutter...

**Mimaki**

www.mimaki-europe.com info@mimaki-europe.com @MimakiEurope

Mimaki Europe B.V. Stammerdijk 7E, 1112 AA Diemen, The Netherlands Tel: +31 (0)20 4627640



SIGN & GRAPHICS

**CJV150 Series**  
PRELIMINARY BROCHURE





**Mimaki**

## Affordable, high-spec, high-performance, integrated printer/cutter

CJV150 Series integrated printer/cutter from Mimaki provides high performance, creativity and versatility with vibrant ink types, including new Silver, Orange and Light Black, in a cost effective package for signmakers, display graphics professionals and printshops.

### CJV150 series delivers ...

- Fast printing speeds up to 56.2m<sup>2</sup> per hour
- High quality print resolution of up to 1,440dpi
- Four different printing widths: 800mm, 1,090mm, 1,361mm and 1,610mm
- Choice of multiple solvent ink sets, including:
  - 10-colour options (SS21) featuring; Silver, Orange, Light Black & White inks
- Nozzle Check Unit (NCU) and Nozzle Recovery System (NRS) ensure continuous print operations
- UISS and optional MBIS III on board 2 litre bulk ink system
- 3-way intelligent heater

**SOLVENT & DYE SUB INKS**  
**4 PRINT WIDTHS AVAILABLE**  
**1,440DPI MAX RESOLUTION**  
**MAPS3 PRINT ENHANCEMENT FUNCTION**  
**56.2m<sup>2</sup>/h MAX. SPEED**



#### ENGINEERING EXCELLENCE AND CREATIVE INNOVATION

Founded in Japan in 1975, Mimaki Engineering has steadily grown by reputation and influence into a global company with large operational bases in Asia and the Pacific, United States and Europe.

Renowned for award-winning performance, peerless build quality and innovative technology, Mimaki has established itself as a leading manufacturer of wide-format inkjet printers and cutting machines for the sign and graphics, textile and apparel and industrial markets. In addition, Mimaki also provides a comprehensive range of supporting products; hardware, software and associated consumable items, such as inks and cutting blades.

From outdoor signage and billboards to interior decoration and furnishing, from packaging and labels to promotional gifts and apparel, Mimaki is committed to developing technology that sets new industry standards, producing machines and products that turn the imagination of our customers into breath-taking reality.

... Mimaki delivers

**Create ...** Metallic stickers, Decals, Die-cut labels, Signage, Vehicle graphics, Banners, Posters, PoS, Back-lit & Exhibition graphics, Garment marking, Canvas prints and much more...

#### EASE OF USE

##### Productivity maintenance - NRS\*1

The NRS substitutes defective nozzles with non-defective nozzles until the technician arrives. This feature enables uninterrupted print operations and continuous productivity.

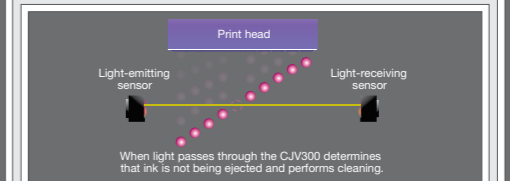
\*1 NRS: Nozzle Recovery System \*2: 10 nozzles per nozzle row can be registered.



##### Prevention, print quality problems - NCU\*

The CJV150 is equipped with Mimaki's original automatic NCU. Clogged nozzles are automatically detected and cleaned by the NCU. If the clogging is not resolved by cleaning, the CJV150 automatically sets the nozzle recovery function NRS and resumes printing. These functions significantly reduce the waste printing caused by clogged nozzles during a continuous printing run.

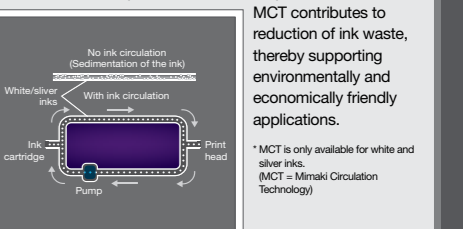
\* NCU: Nozzle Check Unit



##### Stable printing using the ink circulation system - MCT\*

MCT is a standard feature included to effectively avoid the settling of white and silver pigments in the ink lines by regularly circulating the ink. It prevents print troubles and enables stable output from the start of operation. In addition, MCT contributes to reduction of ink waste, thereby supporting environmentally and economically friendly applications.

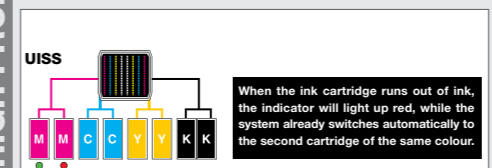
\*MCT is only available for white and silver inks. (MCT = Mimaki Circulation Technology)



#### HIGH PRODUCTIVITY

##### Uninterrupted Ink Supply System (UISS)

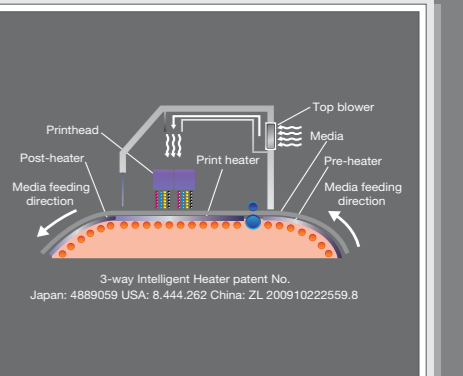
Utilises two cartridges per colour in 4-colour mode. When one cartridge runs out of ink the system switches automatically to the second cartridge of the same colour, enabling long unattended printing.



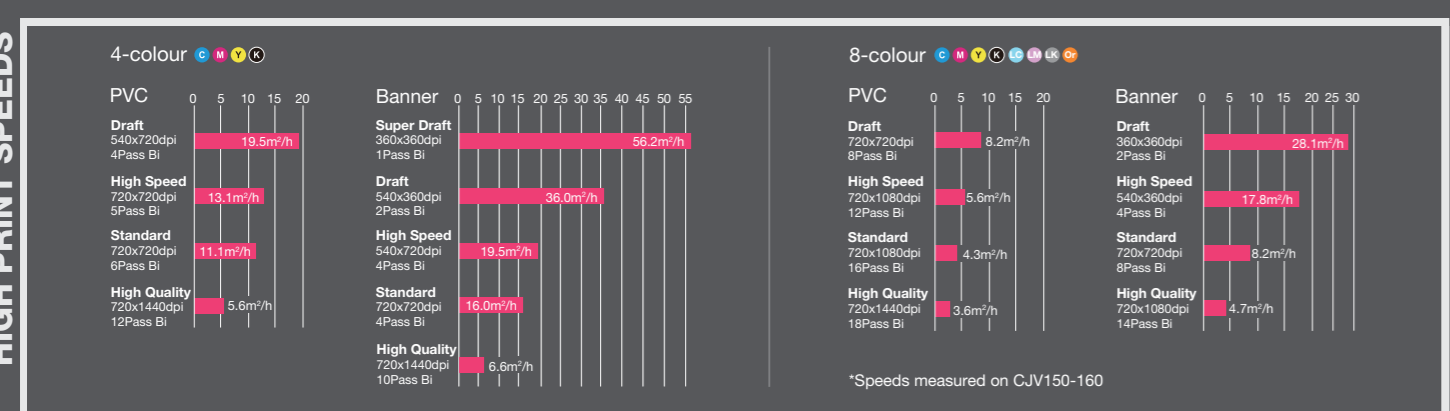
##### 3-Way intelligent heater

A 3-way intelligent heater fixes droplets placed on media. By using Mimaki's original technology in heating the media at a controlled temperature, ink can be fixed while maintaining high colour development and high image quality. Thus the CJV150 provides both steady colour development and easy handling after printing.

- Pre-heater: Heats media to the optimum temperature before printing.
- Print heater: Dries ink after it lands on media before it bleeds, improving colour development.
- Post-heater: Enhances ink drying and achieves stable take-up.
- Top blower: Air blower supports drying of ink.

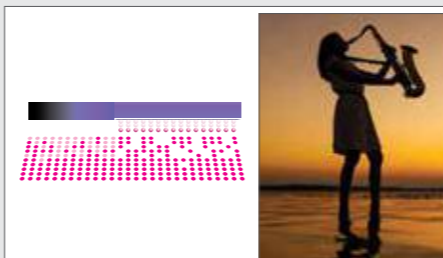


### KEY TECHNICAL FEATURES ...

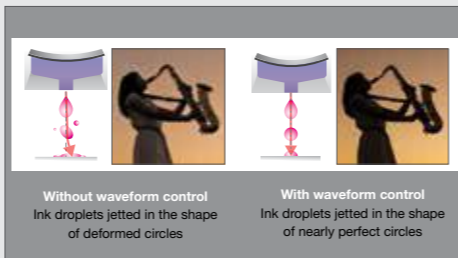


#### BEAUTIFUL OUTPUT

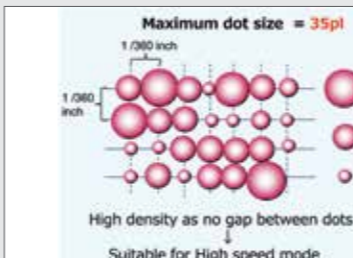
**MAPS3 (Mimaki Advanced Pass System 3)**  
 Reduces banding by dispersing ink drops between passes.



**Waveform Control Technology**  
 Ensures high quality print resolution, by jetting ink drops in straight lines with almost perfect round dots, delivering clear and sharp letters, lines and edges.



**Large ink dot size in high speed mode**  
 Delivers high density print by removing the gap between dots.



#### CREATIVITY

##### Silver Ink (For brilliant metallic effects)

Newly developed SS21 silver ink is available. Being 1.67\* times brighter than conventional silver inks, SS21 ink adds brilliant and beautiful mirror effects to print results.

\*Obtained from comparison measurements of SS21 and E63 silver inks conducted at the Mimaki HQ



##### Orange Ink (Faithful colour reproduction)

By using the orange ink as a process colour, 94.8% of the PANTONE colour chart is covered with approximate colours. Thanks to a wider gamut with the orange ink, food freshness can be simulated, and corporate colours can be faithfully reproduced.



##### Light Black Ink (greater definition)

The light black ink improves the printed grayscale gradation. It also faithfully represents monochrome data without introducing unexpected colour shifts. Light black ink ensures a more accurate colour representation.

