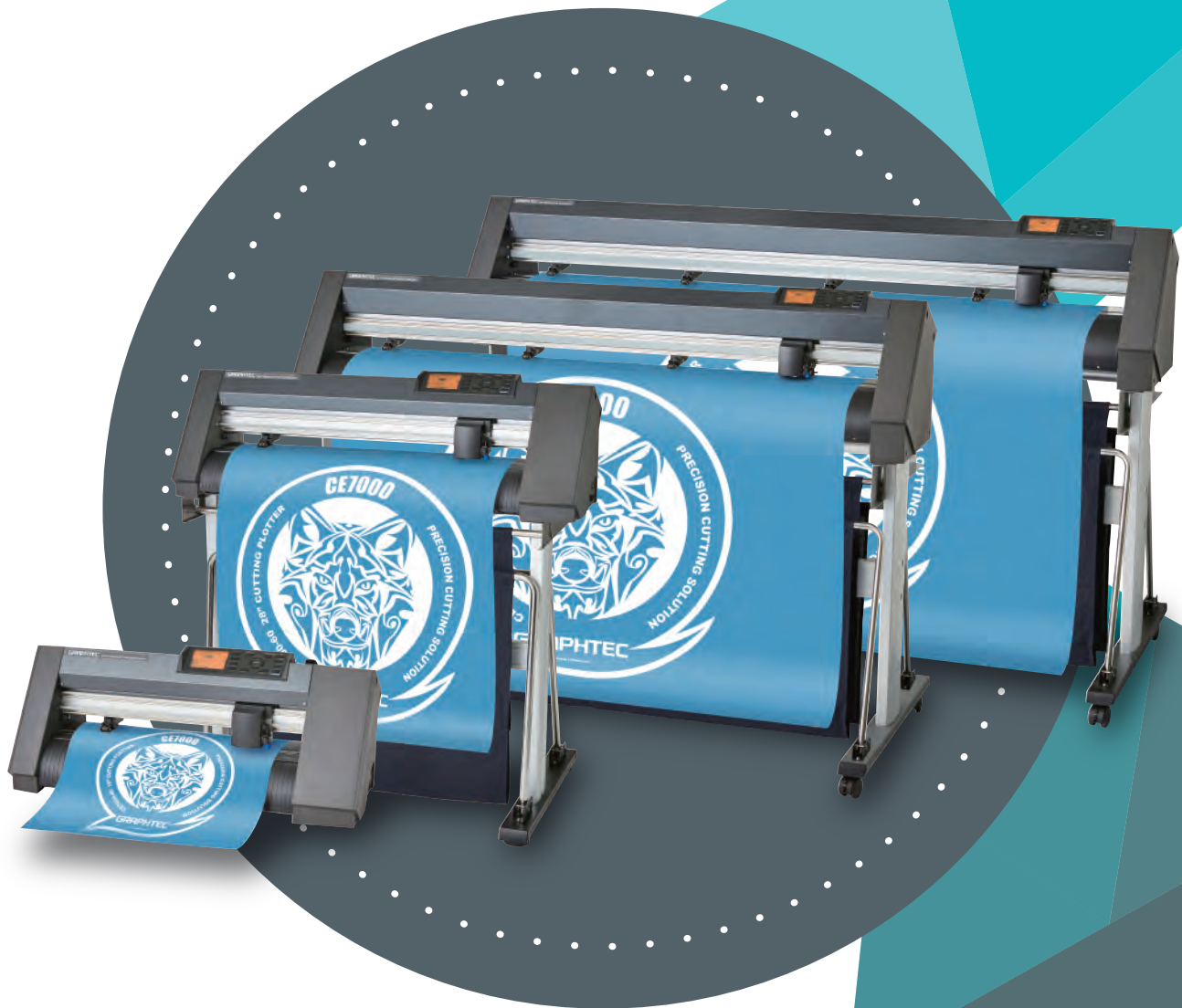


# GRAPHTEC

## Cutting Plotter

# CE7000 series

CE7000-40 / CE7000-60 / CE7000-130 / CE7000-160



Enhanced performance & specification  
at an unrivalled price point

- Features fast cutting speed of up to 1000mm/s and a cutting force of 450g
- Ease of use with enhanced media tracking capabilities
- ARMS 8.0 optical print and cut detection system
- Cut multiple pre-printed graphics without user input by using the latest barcode technology
- Includes high quality, easy to use, professional grade Graphtec Pro Studio software.

\* The basket in photo above is optional item

[sales@spectrumdigitalservices.ie](mailto:sales@spectrumdigitalservices.ie)

# Graphtec, the brand that never stops evolving!

Incorporating new features traditionally only found on higher level more expensive cutting plotters, the CE7000 series offers unrivalled value for money.

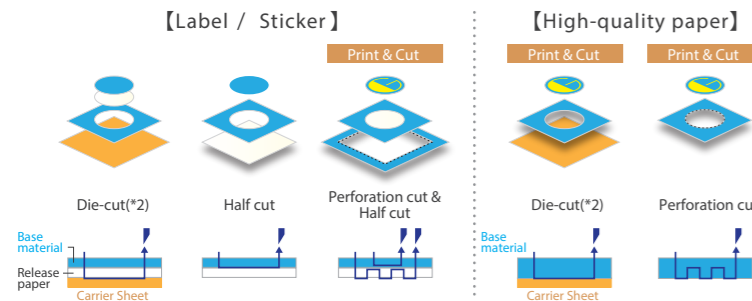


## 4 sizes available to suit your needs

From the compact 400mm desktop option to the new wide format 1.6M, the CE7000 series has a size to suit every application.

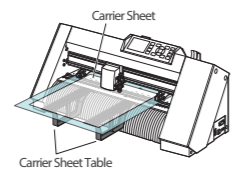
Model	Media Width
CE7000-160	1626mm
CE7000-130	1372mm
CE7000-60	712mm
CE7000-40	484mm

Supports various cutting patterns such as perforation cut with maximum cutting force 450g and maximum cutting speed 1000mm/s



**Carrier Sheet Table**  
It is an optional item that can be attached to the front and back of the cutting plotter to support a carrier sheet.

\* Available with CE7000-40 / -60.



## Performance that guarantees accurate long length tracking

The media stoker helps stabilize the feeding of media. By adjusting the pressure of the middle push roller to the media (\* 1) in three levels, it prevent media floating. Additionally, by using an optional special basket, stability of long cuts can be achieved.



## Data output via USB flash memory without PC

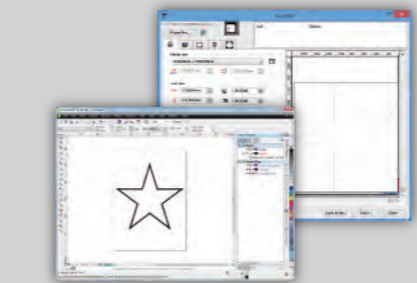
The cutting data designed with Cutting Master 4 or Graphtec Pro Studio / Plus can be output directly to the cutting plotter by saving to USB flash memory. This simplified work-flow enables users to operate without a computer.

\* The USB memory format only supports FAT32. Please note that NTFS and exFAT are not supported.



## Software

### Adobe Illustrator / CorelDRAW plug-in software Cutting Master 4 Standard Accessory

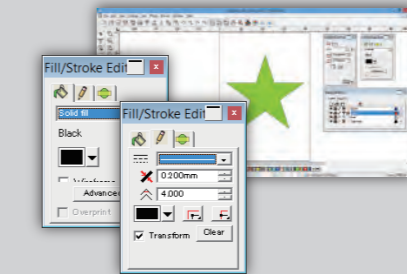


Cutting Master 4 is Graphtec plug-in software for Adobe Illustrator and CorelDRAW Graphic Suite. It sends cutting data to the plotter and includes a variety of functions such as: preview, registration mark creation, tool conditions, cut job settings and more. Cutting Master 4 is easy to use and enables you to get the best performance from your plotter. Trim marks for Adobe Illustrator are available.

Supported OS (*4)	Windows 10/8.1/7, Mac OS X 10.7~macOS 10.15
Supported software (*4)	Adobe Illustrator : CC2019/CC2018/CC2017/CC2015.3/CC2015/CC2014/CC/CS6/CS5/CS4 (*5) CorelDRAW : Graphics Suite 2019/2018/2017/X8/X7/X6/X5/X4

- <Main Features>
- Move, expand, shrink the object directly from the preview window
  - Create object outline, recognize the line width and overlap
  - Output by layer or color ● Insert weeding line
  - Split an object into small pieces with tiling function
  - Connectable and switchable to multiple plotters

### Graphic design software Graphtec Pro Studio Standard Accessory Graphtec Studio



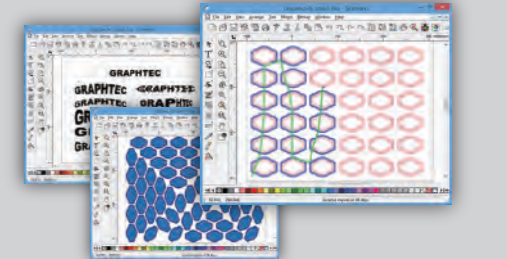
Easy-to-use application software for creating original designs. It has many enhanced functions such as auto-shapes, shading, and editing functions. It can also configure the cutting conditions and other setting on plotter. EPS, Ai(\*6), CMX(\*6), and PDF(\*6) file formats are supported. Graphics created with other popular design software can also be imported into the software.

Supported software (*4)	Graphtec Pro Studio Windows10/8.1/7
	Graphtec Studio Mac OS X 10.6~macOS 10.15

- <Main Features>
- Create designs using auto-shape, various line types, etc.
  - Texts edit (rotate, mirror, fit-to-shape, etc.)
  - Auto-trace (supporting bmp, tiff, jpeg, gif, etc. image format)
  - Connectable and switchable to multiple plotters
  - EPS, DXF-format files and other raster format files are supported
  - Layer (\*6) ● Output by color ● Insert weeding line (\*6)

### Advanced Graphic Design Software Graphtec Pro Studio Plus Option

Optional Software ● Graphtec Pro Studio Plus for Rhinestone  
● Graphtec Pro Studio Plus for Auto Nesting



Graphtec Pro Studio Plus is the enhanced edition of Graphtec Pro Studio. It is optional software with functions for improving productivity and advanced design. Additional functions include: transformation of characters and graphics, automatic sequence number insertion, bar-code creation, templates for rhinestone creation, nesting, directional change of cutting lines, changing cutting order, and more.

Supported OS (*4)	Windows 10/8.1/7
-------------------	------------------

- <Main Features of Graphtec Pro Studio Plus>
- Text and shape deformation, shadow / stripe effects ● Spelling check
  - Vector ● Filter for bitmap image ● Power Nest (Nesting)
  - Serialized numbering, Barcode, QR code, etc. ● Cutting simulation (Changing cutting order) ● Output by layer or color ● Insert weeding line
  - Rhinestone design support
- <Main Features of Graphtec Pro Studio Plus for Rhinestone>
- Rhinestone design support
- <Main Features of Graphtec Pro Studio Plus for Auto Nesting>
- Nesting (Auto, Power Nest, intelligent)

# ARMS 8.0

The Advanced Registration Mark Sensing system delivers precise Print & Cut results by using sensors to detect registration marks and perform axis alignment. Countless efficiency boosting features improve productivity for Print & Cut applications such as stickers and decals.

## Data Link Function (Barcode Data Management/Continuous Cutting)

By reading the Graphtec original Barcode, CE7000 automatically detects its linked data from PC or USB flash memory. This function is available regardless of which printer or RIP software is used.

\* The USB memory format only supports FAT32. Please note that NTFS and exFAT are not supported.



## Continuous Cut (Data Link function)

Barcode data management allows cutting different data sequentially by detecting the "Start Mark" of the new Barcode. Sequential Print & Cut process with roll-media is now available.



## Supports colored marks / specialty media

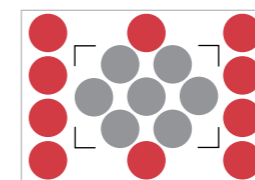
A wide variety of media types including holographic paper and reflective sheets are now compatible due to improvements of the ARMS sensor algorithm.



\* Sensor may not be able to read certain combinations of specialty media and colored marks.

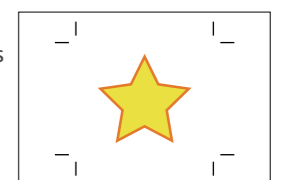
## Expanded Cutting Area

The expanded cutting area to include objects outside of the area enclosed by registration marks. Production efficiency is enhanced by reducing media waste.



## Supports Adobe Illustrator "Crop Marks"

Using the plug-in software Cutting Master 4, Adobe Illustrator crop marks will be available.



- \*1 CE7000-130, CE7000-160
- \*2 Using carrier sheet is necessary.
- \*3 In case that using optional baskets of CE7000-60/130/160 and cutting media and conditions specified by our company.
- \*4 For more information about compatibility of the latest OS or application software, please check the Graphtec website or contact your local representative of Graphtec.
- \*5 CS4 is supported with Windows only.
- \*6 Supported on Graphtec Pro Studio only

Specifications				
Item	CE7000-40	CE7000-60	CE7000-130	CE7000-160
Configuration	Grit rolling type			
Drive method	Digital servo drive			
Max. cutting area (W x L) (*1)	375mm x 50m	603mm x 50m	1270mm x 50m	1524mm x 50m
Cutting area of guaranteed accuracy (*1) (When using optional basket)	355mm x 2m	583mm x 2m (583mm x 5m)	1250mm x 2m (1250mm x 5m)	1504mm x 2m (1504mm x 5m)
Mountable media width	Min.	50mm		
	Max.	484mm (19inch)	712mm (28inch)	1372mm (54inch)
Mountable roll media mass	5kg	9kg	17kg	20kg
Number of push rollers	2 rollers		4 rollers (Max. 5 (option))	
Max. cutting speed	600mm/s at all direction		900mm/s at 45° direction	
Acceleration	Max. 21.2m/s <sup>2</sup> at 45° direction		Max. 13.9m/s <sup>2</sup> at 45° direction	
Cutting force	Max. 4.41N (450gf)			
Minimum character size	Approx. 5 mm alphanumeric (varies depending on character font and media)			
Mechanical resolution	0.005mm			
Programmable resolution	GP-GL : 0.1/0.05/0.025/0.01mm HP-GL™ (*2) : 0.025mm			
Repeatability (*1)	Max. 0.1 mm in plot up to 2 m (Excluding media expansion and contraction)			
Mountable number of tools	1 tool			
Blade types	Supersteel			
Pen types	Oil-based ballpoint pen, Water-based fiber-tip pen			
Media types	Up to 0.25mm thickness Marking film (PVC / fluorescence / reflection), polyester film (With specified conditions)			
Interface	USB 2.0(Full Speed), Ethernet 10BASE-T/100BASE-TX			
Buffer memory	2MB			
Command sets	GP-GL / HP-GL™ (Set by command or auto-detect) (*2)			
Display	Graphic type LCD with back-light (240dots x 128dots), supports 10 languages			
Power source	100V to 120V AC, 200V to 240V AC, 50 / 60 Hz			
Power consumption	Up to 100W			
Operating environment	10 to 35 °C, 35 to 75 % R.H. (non-condensing)			
Guaranteed accuracy environment	16 to 32 °C, 35 to 70 % R.H. (non-condensing)			
External dimensions (W x D x H) (with basket)	Approx. 772 x 292 x 313 mm	Approx. 1005 x 582 x 1092 mm (1005 x 936 x 1092 mm)(*3)	Approx. 1704 x 811 x 1215 mm (1704 x 1148 x 1215 mm)(*3)	Approx. 1916 x 811 x 1215 mm (1916 x 1148 x 1215 mm)(*3)
Weight (approx.) (with basket)	13 kg	23 kg (25.2 kg)(*3)	51 kg (54.9 kg)(*3)	55 kg (59.5 kg)(*3)
Compatible OS (*4)	Windows 10/8.1/7 Mac OS X 10.6 ~ 10.11 / macOS 10.12 ~ 10.15 (Graphtec Studio: 10.6 - 10.15, Cutting Master 4: 10.7 - 10.15)			
Supported software (*5)	Graphtec Pro Studio(Windows)(*6), Graphtec Studio(Mac), Cutting Master 4(*6), Windows Driver			
Safety	PSE, UL/cUL, CE mark			
EMC	VCCI Class A, FCC Class A, CE mark			

Option		
Item	Part No.	Description
Basket for CE7000 series	PG0103	For CE7000-60
	PG0104	For CE7000-130
	PG0105	For CE7000-160
Carrier sheet table	OPH-A45	For CE7000-40 or CE7000-60
Additional push roller kit	OPH-A49	Only for CE7000-130/CE7000-160
Optional Stand	ST0118	For CE7000-60
Graphtec Pro Studio Plus	OPS682-PLS	Design software including all advanced functions (1 license)
Graphtec Pro Studio Plus for Rhinestone	OPS682-RSF	Limited edition of rhinestone function only (1 license)
Graphtec Pro Studio Plus for Auto Nesting	OPS682-ANF	Limited edition of auto nesting function only (1 license)

Standard accessories		
Item	Qty	Description
Power cord	1	The type of cord is different by destination.
USB Cable	1	2.9m long
Cutting blade holder	1	PHP33-CB09N-HS
Cutting Blade	1	CB09UB-1P
Loupe	1	PM-CT-001
Fiber-tip pen holder	1	PHP31-FIBER
Water-based Fiber-tip pen	1	KF700-BK (black)
Roll Media Tray	1	Only for CE7000-40
Stand for CE7000	1	Standard accessory for 130 / 160
DVD-ROM	1	User manual, Windows driver, Graphtec Pro Studio (Windows, 1 license), Graphtec Studio (Mac), Cutting Master4
Printed document	1	Setup Manual, Cutter Blade Manual and Safety Manual

Supplies			
Item	Part No.	Description	Package
Cutting blade holder	PHP33-CB09N-HS	For CB09U series blade	1 set/pack
	PHP33-CB15N-HS	For CB15U series blade	1 set/pack
Cutting blade	CB09-P	0.9mm dia. 45° angle, Supersteel	5 blades/pack
	CB09UB-5	0.9mm dia. 45° angle, Supersteel	5 blades/pack
	CB09UB-K60-5	0.9mm dia. 60° angle, for Car-film	5 blades/pack
	CB15U-5	1.5mm dia. 45° angle, for paper/cardboard	5 blades/pack
	CB15U-K30-5	1.5mm dia. 30° angle, for paper/cardboard	5 blades/pack
Loupe	PM-CT-001	Checking blade length, for PHP33 and PHP35 series	1 set/pack
Fiber-tip pen holder	PHP31-FIBER	Pen holder for KF700 series pen	1 set/pack
Water-based fiber-tip pen	KF700-BK	Pen (black)	10 pens/pack
	KF700-RD	Pen (red)	10 pens/pack
Ballpoint pen holder	PHP34-BALL	Pen holder for KB700 pen	1 set/pack
Oil-based ballpoint pen	KB700-BK	Pen (black)	10 pens/pack
Carrier Sheet	CR09300-A3	A3 size	2 sheets/pack
Cutting mat	PM-CR-009	For CE7000-40 replacement cutting mat	2 sets/pack
	PM-CR-010	For CE7000-60 replacement cutting mat	2 sets/pack
	PM-CR-011	For CE7000-130 replacement cutting mat	2 sets/pack
	PM-CR-012	For CE7000-160 replacement cutting mat	2 sets/pack

- \* CE7000-160 is not available in US & Korea.
- \*1 Operated with Graphtec specified cutting condition and media. For long-length cutting, the basket is used.
- \*2 HP-GL™ is a registered trademark of Hewlett-Packard Company.
- \*3 When equipped with the stand.
- \*4 Graphtec does not support software/driver used with operating systems that have become obsolete and are no longer supported by the OS developer.
- \*5 The software can be used by downloading from Graphtec website.
- \*6 It requires an internet connection in order for activation or registration when starting the software for the first time.

- Brand names and product names listed in this brochure are the trademarks or registered trademarks of their respective owners.
- Items mentioned are subject to change without notice. For more information about product, please check the web site or contact your local representative.

### ⚠ Important safety instructions

- Before using it, please read the user manual and then please use it properly in accordance with the description.
- To avoid malfunction or electric shock, please ensure ground connection and use it in specified power source.

For more information please contact

# Spectrum Digital Services

sales and service for the sign & digital print industry

T: 00353 (0)1 8991 906

E: sales@spectrumdigitalservices.ie

www.spectrumdigitalservices.ie

H3 Centrepoint, Rosemount Business Park, Ballycoolin, Dublin 11 - Ireland



CE7000\_JE10551\_1P